

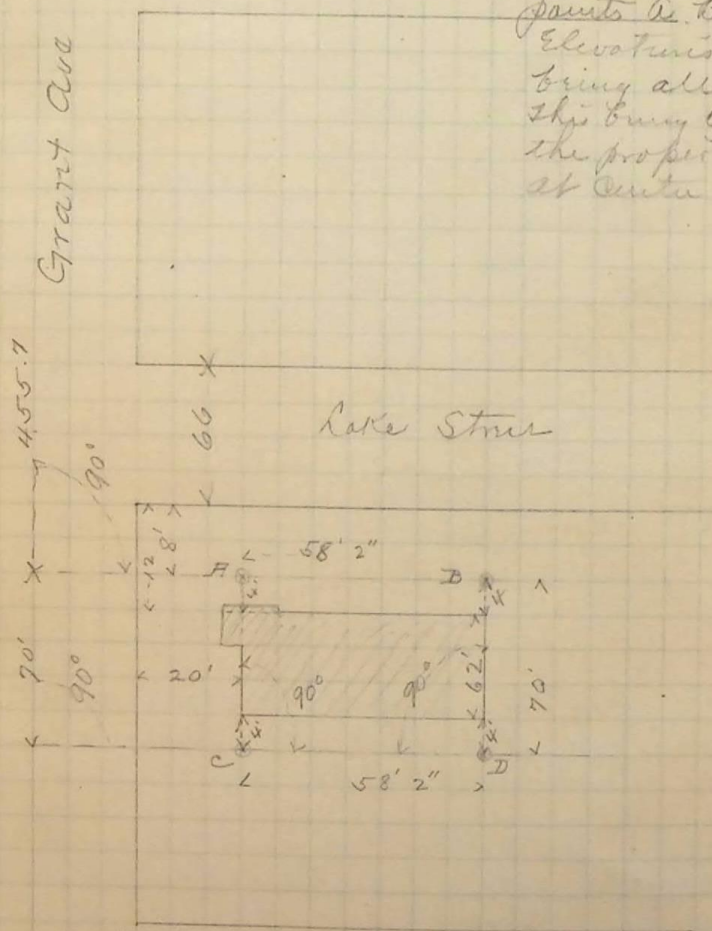
Survey to locate Central Fire Station -

Oct 13 1891

North
→

Monument
25th Street

Take and grade
hubs at each of
points A, B, C, & D.
Elevations of hubs
bring all =
this being 0.7 above
the property grade
at center of building



Monument
26th Street

4308.72
3.06
2.0 4311.78
3.45
8.44 4308.30
5.23 8.20
11.75
3.02
8.73

Notes for levels to set hubs A, B, C, & D.

BS	H. I.	I.S.	Elev	Elevation of Hubs
B.M.	218	4310.92	4308.72	On Bennett Block
			2.46	4308.44
			2.46	4308.44
			2.46	4308.44
			2.00	4308.44
			2.00	4308.44

This Elevation reduced to 4308.23 to give less slope to approach